

IQS-2100/FLS-2100

R&D AND MANUFACTURING—OPTICAL

- Single- or dual-wavelength LED or Fabry-Perot laser
- 10 dB variable output power
- Excellent stability
- Available in benchtop (FLS) or modular (IQS) format



High-Performance Optical Light Sources

Advanced testing environments require a high-performance, stable light source to guarantee accurate and reliable test results. Designed for optimal stability, the modular IQS-2100 and benchtop FLS-2100 offer this and more. Steady drive circuitry maximizes optical output power and maintains excellent stability, while precision optical components ensure low-loss, narrow-beam, truly efficient output coupling.

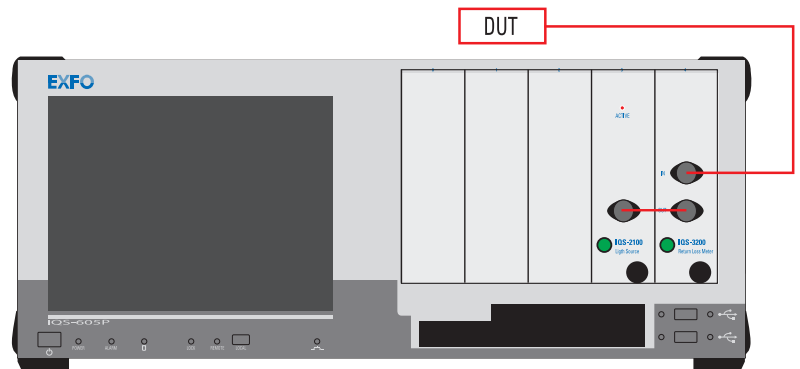
Key Features and Benefits

- Variable output power over a 10 dB range (6 dB range for LED sources)
- Adjustable power increments of 0.1 dB
- Stabilized laser sources
- User-friendly software solutions



ORL Measurement

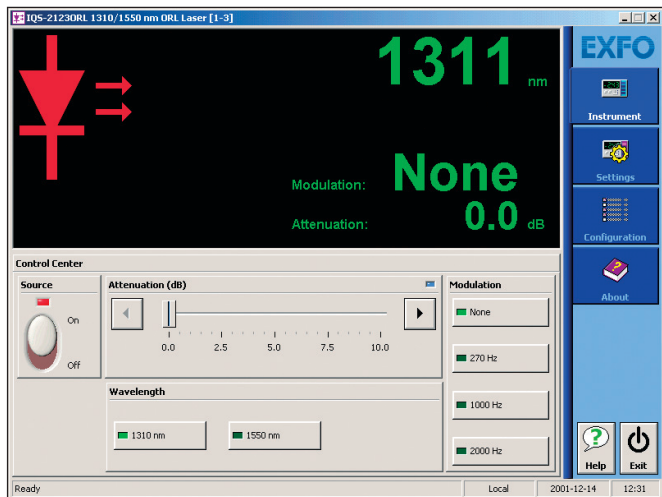
Reduce interference-related problems when measuring a device's ORL with EXFO's large linewidth Fabry-Perot laser, the IQS-2100 ORL Light Source. This source is available at 1310 nm, 1550 nm and 1625 nm for use in EXFO's modular IQS-600 platform. Combine one or many sources with the IQS-3200 Return Loss Meter to create a custom test station.



The IQS-600 Intelligent Test System

The new IQS-600 Intelligent Test System provides a flexible approach to optical test and measurement for manufacturing, automation, optical qualification and R&D. It combines powerful features and control capabilities for up to 100 modules.

Based on standard industrial PC architecture, the IQS-600 Intelligent Test System is a scalable modular platform that includes controllers, expansion units and a comprehensive range of plug-in test modules. The IQS-600 is also backward-compatible with most modules from EXFO's IQS-500 and even IQ generation, allowing you to maximize the return on your previous investments. The IQS-600 Intelligent Test System offers a powerful, easy-to-use environment to match your most demanding needs.



Simple, Flexible Software

- Store multiple-user configurations
- Run several applications simultaneously

Variable output power

- 10 dB power range variation (laser)
- 6 dB power range variation (LED)
- Fine-tuning of output power at 0.1 dB increments
- Simulation of small power losses

Choice of output signal

- Modulate the source
- Choose from three modulation frequencies: 270 Hz, 1 kHz and 2 kHz at 50 % duty cycle

Precise wavelength identification

- Save time when performing spectral tuning
- Display LED wavelength to the nearest 10 nm
- Display laser wavelength to the nearest 1 nm

Available Configurations

Multimode LED sources

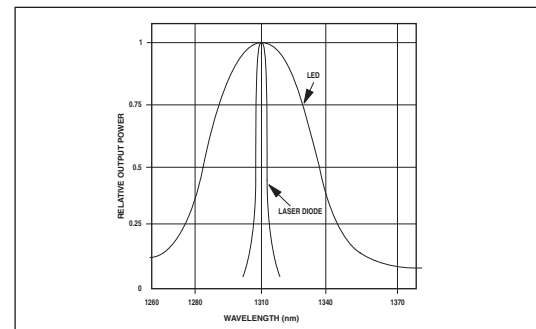
- 850 nm LED
- 1300 nm LED
- 850/1300 nm dual LED

Temperature-controlled lasers

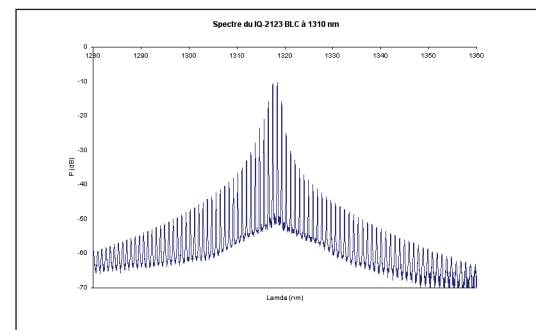
- 1310 nm Fabry-Perot laser
- 1550 nm Fabry-Perot laser
- 1625 nm Fabry-Perot laser
- 1310/1550 nm dual Fabry-Perot laser
- 1550/1625 nm dual Fabry-Perot laser
- 1310 nm Fabry-Perot laser (ORL)
- 1550 nm Fabry-Perot laser (ORL)
- 1625 nm Fabry-Perot laser (ORL)
- 1310/1550 nm dual Fabry-Perot laser (ORL)
- 1550/1625 nm dual Fabry-Perot laser (ORL)

Excellent stability

- ± 0.003 dB to ± 0.005 short-term stability (15 minutes)
- ± 0.03 dB to ± 0.05 long-term stability (8 hours)
- TEC lasers for guaranteed stability
- ORL sources include an optical isolator



■ The difference between LED and laser spectral widths



■ Typical Fabry-Perot spectral distribution

FLS-2100 Functionality

The FLS-2100 Optical Light Source features variable output power over a 10 dB range (6 dB range for LED sources) to simulate power losses with precision. Fine-tune this output power in precise increments of 0.1 dB. Fabry-Perot laser sources are stabilized by thermo-electric coolers that regulate the submount's internal temperature. Both LED and laser versions come in various wavelengths to fit all singlemode and multimode applications.

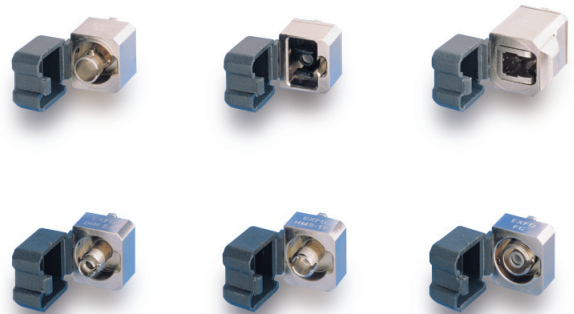


Remote-Control Capability

Enable remote operation of the FLS-2100 from any compatible PC or test station with standard GPIB, Ethernet and RS-232 interface. Use your computer to program software solutions for complex test procedures.

Universal Interface

Avoid high insertion loss, high return loss and measurement instability caused by dirty or contaminated connectors by using the Universal Interface. This patented universal connector gives you direct access to the ferrule, simplifying connector cleaning and ensuring better results. Designed to easily interchange from one connector type to another, the Universal Interface with fixed baseplate is available for PC, ultra-PC (UPC) and angled-PC (APC) connectors.



Rackmount

The FLS-2100 can be used as a stand-alone instrument or mounted on a 19-inch rack (optional).

Applications:

- Linearity measurements of variable attenuators and power meters
- Insertion loss measurements
- Return loss measurements
- Spectral attenuation measurements in fibers
- Instrument calibration
- Component characterization
- Splicing test stations
- Stability measurements
- Polarization-dependent loss measurements

SPECIFICATIONS

TEC Fabry-Perot Laser Specifications ^a

Model	02BLC	03BLC	04BLC	23BLC	34BLC
Wavelength ^b (nm)	1310 +20/-30	1550 ± 20	1625 ± 15	1310 +20/-30 1550 ± 20	1550 ± 20 1625 ± 15
Spectral width (rms) ^c (nm)	2	5	10	2/5	5/10
Output power (dBm)	≥ 0	≥ 0	≥ -4	≥ -1	≥ -4
Stability ^d (dB) (D/2)					
15 min	± 0.003	± 0.003	± 0.01	± 0.005	± 0.01
8 h	± 0.03	± 0.03	± 0.05	± 0.05	± 0.05
Temperature sensitivity ^e (dB)	± 0.25	± 0.25	± 0.25	± 0.25	± 0.25
Modulation	270 Hz, 1 kHz, 2 kHz (50 % duty cycle)				
Model	02ORL	03ORL	04ORL	23ORL	34ORL
Wavelength ^b (nm)	1310 +20/-30	1550 ± 20	1625 ± 15	1310 +20/-30 1550 ± 20	1550 ± 20 1625 ± 15
Spectral width (rms) ^c (nm)	2	5	10	2/5	5/10
Output power (dBm)	≥ -2	≥ -2	≥ -6	≥ -3	≥ -6
Stability ^d (dB) (D/2)					
15 min	± 0.01	± 0.01	± 0.01	± 0.01	± 0.01
8 h	± 0.03	± 0.03	± 0.03	± 0.05	± 0.03
Temperature sensitivity ^e (dB)	± 0.25	± 0.25	± 0.25	± 0.25	± 0.25

SURFACE-EMITTING LED SPECIFICATIONS ^a

Model	01C/D	02C/D	12C	12D
Wavelength ^b (nm)	850 ± 25	1300 +45/-60	850 ± 25 1300 +45/-60	850 ± 25 1300 +45/-60
Spectral width (FWHM) ^{f, g} (nm)	50	145	50/145	50/145
Output power (dBm)	≥ -17/≥ -14	≥ -21/≥ -17	≥ -18/-22	≥ -15/-18
Stability ^d (dB) (D/2)				
15 min	± 0.003	± 0.003	± 0.005	± 0.005
8 h	± 0.03	± 0.03	± 0.05	± 0.05
Temperature sensitivity ^e (dB)	± 0.4	± 0.4	± 0.4	± 0.4
Modulation	270 Hz, 1 kHz, 2 kHz (50 % duty cycle)			

Notes

- All specifications are applicable to a 2 m fiber output (specified type) with FC/UPC (singlemode) and FC/PC (multimode) connectors, without any attenuation applied.
- Valid over the operating temperature range.
- rms = root mean square. Spectral width is a typical value.
- Valid after a 1-hour warmup period at a constant temperature within the operating range. A 30-minute warmup period is needed if the module is stored beforehand at the same temperature. The stability is expressed as ± half the difference between the maximum and minimum values measured during the period.
- For a temperature variation between 0 °C to 40 °C.
- FWHM = full width at half maximum.
- Typical value.

IQS-2100 GENERAL SPECIFICATIONS

Size (H x W x D)	125 mm x 36 mm x 282 mm	(4 15/16 in x 1 7/16 in x 11 1/8 in)
Weight	0.5 kg	(1.1 lb)
Temperature		
Operating	0 °C to 40 °C	(32 °F to 104 °F)
Storage	-35 °C to 70 °C	(-31 °F to 158 °F)
Relative humidity	0 % to 95 % non-condensing	

FLS-2100 GENERAL SPECIFICATIONS

Size (H x W x D)	117 mm x 222 mm x 333 mm	(4 5/8 in x 8 3/4 in x 13 1/8 in)
Weight	1.2 kg	(2.6 lb)
Temperature		
Operating	0 °C to 40 °C	(32 °F to 104 °F)
Storage	-35 °C to 70 °C	(-31 °F to 158 °F)
Relative humidity	0 % to 80 % non-condensing	

INSTRUMENTS DRIVERS

LabVIEW™ drivers and SCPI commands

REMOTE CONTROL

With IQS-600: GPIB (IEEE-488.1, IEEE-488.2) Ethernet and RS-232.
With FLS-2100: GPIB (IEEE-488.1, IEEE-488.2) and RS-232.

SAFETY

21 CFR 1040.10, IEC 60825-1: Ed.1.1 1998:
CLASS 1 LASER PRODUCT
CLASS 1 LED PRODUCT

STANDARD ACCESSORIES

User Guide, Certificate of Compliance and AC power cord for FLS-2100

ORDERING INFORMATION

FLS-21 XXXXX-XX
IQS-21 XXXXX-XX

Platform type ■

IQS = module in IQS-500/600

Source code ■

- 01C = 850 nm LED, 50/125 μm fiber
- 02C = 1300 nm LED, 50/125 μm fiber
- 01D = 850 nm LED, 62.5/125 μm fiber
- 02D = 1300 nm LED, 62.5/125 μm fiber
- 12C = 850/1300 nm dual LED, 50/125 μm fiber
- 12D = 850/1300 nm dual LED, 62.5/125 μm fiber
- 02BLC = 1310 nm TEC laser
- 03BLC = 1550 nm TEC laser
- 04BLC = 1625 nm TEC laser
- 23BLC = 1310/1550 nm TEC laser
- 34BLC = 1550/1625 nm TEC laser
- 02ORL = 1310 nm TEC laser for ORL measurements
- 03ORL = 1550 nm TEC laser for ORL measurements
- 04ORL = 1625 nm TEC laser for ORL measurements
- 23ORL = 1310/1550 nm TEC laser for ORL measurements
- 34ORL = 1550/1625 nm TEC laser for ORL measurements

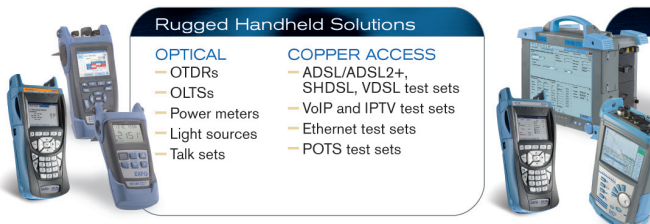
■ **Connector or universal interface code**

- 50 = FC/PC (multimode sources only)
- 58 = FC/APC narrow key
- 74 = ST/PC (multimode sources only)
- 89 = FC/UPC
- 90 = ST/UPC
- EI-EUI-28 = UPC/DIN 47256
- EI-EUI-76 = UPC/HMS-10/AG
- EI-EUI-89 = UPC/FC narrow key
- EI-EUI-90 = UPC/ST
- EI-EUI-91 = UPC/SC
- EI-EUI-95 = UPC/E-2000
- EA-EUI-28 = APC/DIN 47256
- EA-EUI-89 = APC/FC narrow key
- EA-EUI-91 = APC/SC
- EA-EUI-95 = APC/E-2000

Fiber code

- B = 9/125 μm fiber
- C = 50/125 μm fiber
- D = 62.5/125 μm fiber

Example: FLS-2103BLC-EI-EUI-89
IQS-2103BLC-EI-EUI-89



Rugged Handheld Solutions

OPTICAL — OTDRs — OLTSs — Power meters — Light sources — Talk sets	COPPER ACCESS — ADSL/ADSL2+, SHDSL, VDSL test sets — VoIP and IPTV test sets — Ethernet test sets — POTS test sets
--	---

Platform-Based Solutions

OPTICAL FIBER — OTDRs — OLTSs — ORL meters — Variable attenuators	DWDM TEST SYSTEMS — OSAs — PMD analyzers — Chromatic dispersion analyzer	TRANSPORT AND DATA COM — Next-generation SONET/SDH and OTN testers — SONET/DSn (DS0 to OC-192) testers — SDH/PDH (64 kbit/s to STM-64) testers — T1/T3, E1 testers — 10/100 Mbit/s and Gigabit Ethernet testers — Fibre Channel testers — 10 Gigabit Ethernet testers
--	--	---

EXFO Corporate Headquarters > 400 Godin Avenue, Quebec City (Quebec) G1M 2K2 CANADA | Tel.: 1 418 683-0211 | Fax: 1 418 683-2170 | info@EXFO.com

Toll-free: 1 800 663-3936 (USA and Canada) | www.EXFO.com

EXFO America	3701 Plano Parkway, Suite 160 Plano, TX 75075 USA	Tel.: 1 800 663-3936	Fax: 1 972 836-0164
EXFO Europe	Omega Enterprise Park, Electron Way Chandlers Ford, Hampshire S053 4SE ENGLAND	Tel.: +44 2380 246810	Fax: +44 2380 246801
EXFO Asia	151 Chin Swee Road, #03-29 Manhattan House SINGAPORE 169876	Tel.: +65 6333 8241	Fax: +65 6333 8242
EXFO China	No. 88 Fuhua, First Road, Central Tower, Room 801 Futian District Beijing New Century Hotel Office Tower, Room 1754-1755 No. 6 Southern Capital Gym Road	Shenzhen 518048 P. R. CHINA Beijing 100044 P. R. CHINA	Tel.: +86 (755) 8203 2300 Tel.: +86 (10) 6849 2738
			Fax: +86 (755) 8203 2306 Fax: +86 (10) 6849 2662

EXFO is certified ISO 9001 and attests to the quality of these products. This device complies with Part 15 of the FCC Rules. Operation is subject to the following two conditions: (1) this device may not cause harmful interference, and (2) this device must accept any interference received, including interference that may cause undesired operation. EXFO has made every effort to ensure that the information contained in this specification sheet is accurate. However, we accept no responsibility for any errors or omissions, and we reserve the right to modify design, characteristics and products at any time without obligation. Units of measurement in this document conform to SI standards and practices. In addition, all of EXFO's manufactured products are compliant with the European Union's WEEE directive. For more information, please visit www.EXFO.com/recycle. Contact EXFO for prices and availability or to obtain the phone number of your local EXFO distributor.

For the most recent version of this spec sheet, please go to the EXFO website at <http://www.EXFO.com/specs>
In case of discrepancy, the Web version takes precedence over any printed literature.